

Customer :

customer

Customer part :

customer part

Comment :

Comment

S1=0.06

S2=0.46

Tmax=605

Tp S2=644.0

PI=0.12

HI=10

Sample =2925.8

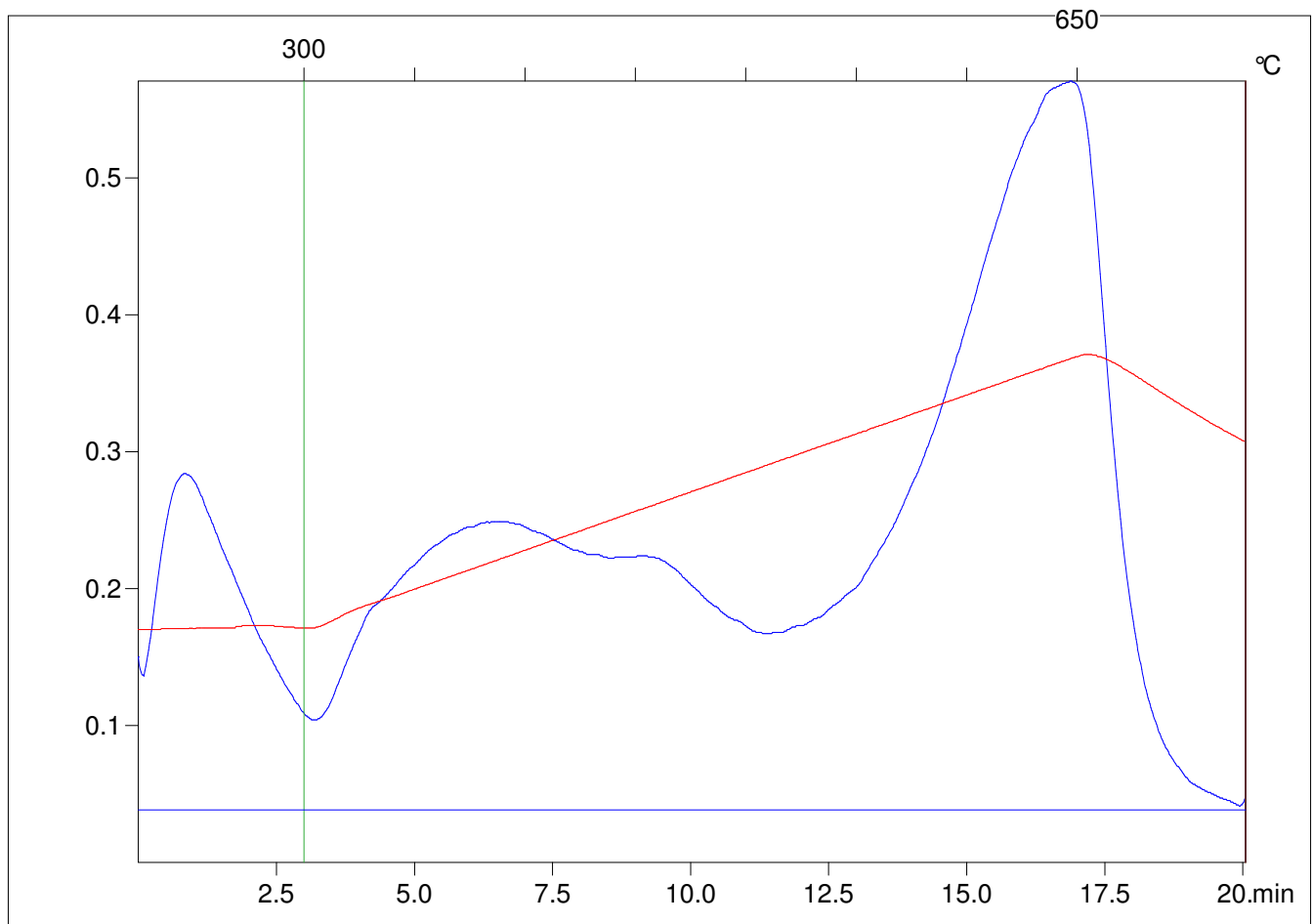
Method =Bulk Rock

Cycle=Basic

KFID(10\*9)=1550

Qty =70.3

TOC=4.42



C:\VINC\PK130315\PK025.R00 : FID pyrolysis graphic

State

Pyro Status

Oxi Status